

Empowered by Innovation

NEC



NEAX 2000 IPS

INTERNET PROTOCOL SERVER

Technology that helps you work smarter, not harder.

Today's office can no longer operate or survive with pockets of separate information; The NEAX2000IPS brings people and knowledge together.

Take advantage of all the benefits of peer-to-peer IP telephony for your mid-sized or branch office with the NEAX2000IPS (Internet Protocol Server) while enjoying the many hundreds of PBX features you've come to expect from NEC.

What Is Peer-to-Peer Switching?

"Peer-to-peer" switching means that the stations participating in a call are connected directly to each other through the IP network. The signals travel through the IP network but do not "go through" the switch as they do in traditional telephony. The fact that the NEAX2000IPS can function in and support a "hybrid" network with traditional digital/analog switching, IP/TDM/IP switching and pure peer-to-peer IP switching means that users can continue to utilize their existing equipment while they phase in IP telephony and lay foundation for future networks.

Reduced Costs of Peer-to-Peer IP Connectivity

The NEAX2000IPS retains all the features of the popular NEAX7400ICS M100MX/NEAXPABX Series, while offering significant cost savings associated with peer-to-peer telephony such as:

Converged WAN Infrastructures --

Pay for service and maintenance of one network rather than two. By transporting voice signals across the Wide Area Network as IP packets, users can integrate their voice traffic with their data traffic.

The Promise of NEON

Migration with investment protection is the cornerstone of NEC's Enterprise Open Network (NEON). NEON embodies NEC's philosophy that drives development of complementary communication solutions for OPEN networks, delivering value-added capabilities and quality of service, while protecting investment; all without compromising the user experience.

Converged LAN Infrastructures --

Establish voice calls across the 10/100 Ethernet Local Area Network utilize the existing plant cabling and allowing single-cable termination to the desktop.

Reduced Equipment Requirements --

Reduce the need for cards while minimizing the required plant footprint as well. In traditional TDM telephony, a single port is required for each station and each tie line connection. With IP connectivity, multiple calls are controlled through a single 10/100 Ethernet port while voice travels directly between the user telephones.

Investment Protection

Even if you're not ready to migrate to 100% IP Telephony immediately, the NEAX7400ICS M100MX/NEAX2000IPS supports traditional circuit-switched telephony (Time Division Multiplexed) on both the trunk and line sides. This simultaneous compatibility allows current

users of NEAXPABX Series systems to retain their existing TDM equipment (thus protecting their original investment) as they begin to make the migration to pure IP telephony. All previous version of the NEAX7400ICS/M100MX, NEAXPABX Series can be upgraded to the NEAX2000IPS easily and inexpensively.

Functions Alone or in a Network

The NEAX2000IPS function as a standalone telephony system supporting both IP and traditional circuit switched connectivity. As such, it can support up to 512 stations and 240 digital trunks. Yet it can also be networked with full feature transparency into a system with other NEC telephony devices such as the NEAXPABX Series, of course, other NEAX2000IPS units. In this case, the NEAX2000IPS supports node-to-node peer-to-peer connectivity. Up to 255 NEAX2000IPS nodes can be networked together.

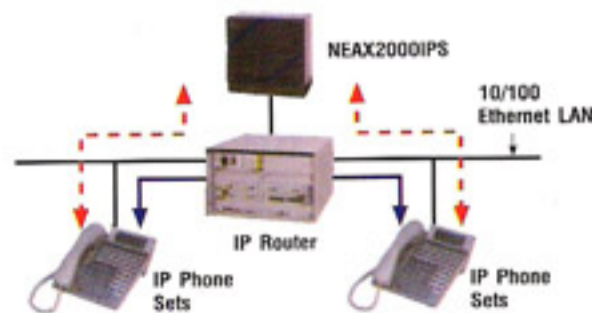
The Bottom Line

The NEAX2000IPS offers the full range of PBX features while utilizing less equipment and occupying less floor space than a traditional PBX. Additionally, NEC's broad range of IP phone sets all have a multi-port switch built in, thereby enabling one-cable termination to the desktop. Furthermore, with NEC's migration strategy, you can switch to IP telephony now or in the future while protecting your investment.

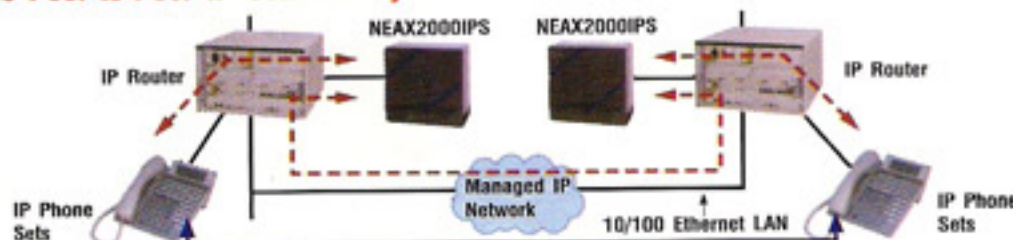
Node-to-Node Peer-to-Peer IP Connectivity in LAN

The NEAX2000IPS unit assists in the call setup process and provides the full range of NEAX telephony features.

Once the call is established, it is "carried" only by the network. The NEAX2000IPS unit only "re-enters" when requested to provide a function such as conferencing in a third party.

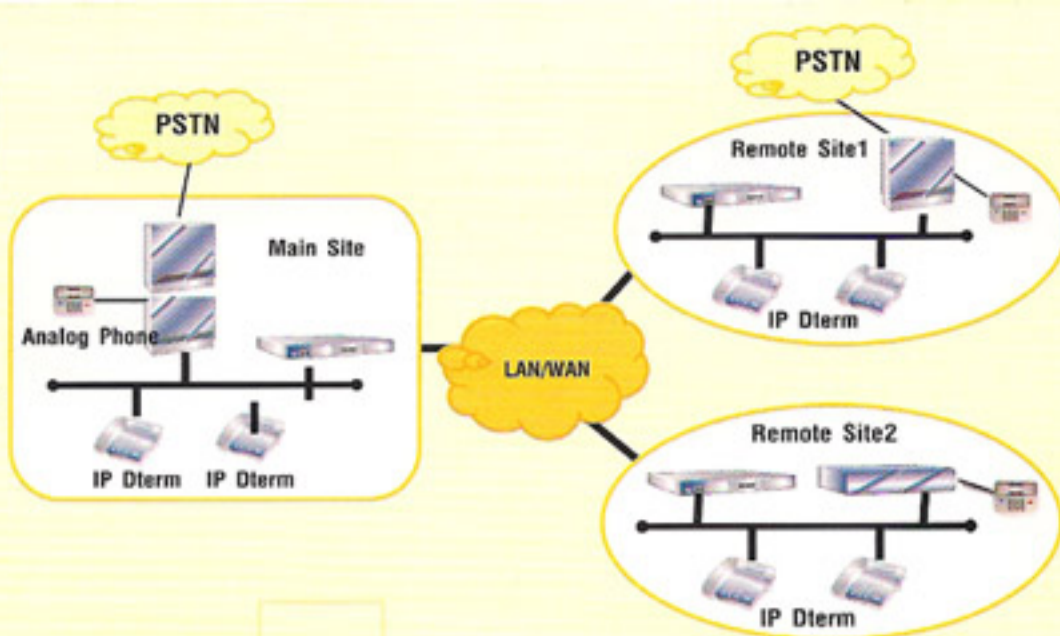


Node-to-Node Peer-to-Peer IP Connectivity Across WAN



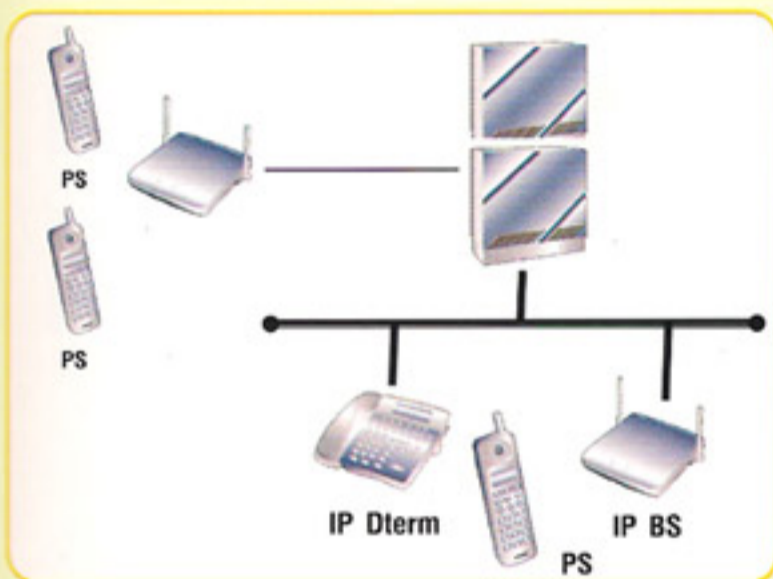
Remote PIM Over IP

NEAX2000 IPS PIM and IPS DM are installed at remote site, and connected to a NEAX2000 IPS at main site over IP network, the Main Site system controls and maintains the remote DM and PIM operation as one single system. If a communication failure occurs between the Main Site and Remote Site, the Remote Site automatically changes over to a survival mode and operates as a stand-alone system.



PHS

NEAX Wireless Communication Solution provides interface with a Personal Station (PS) via Base Station (BS) and establishes most suitable communication environment regardless of the scale or situation of the office, using NEAX series communication system with unified wireless communication solution.



Dterm Assistance

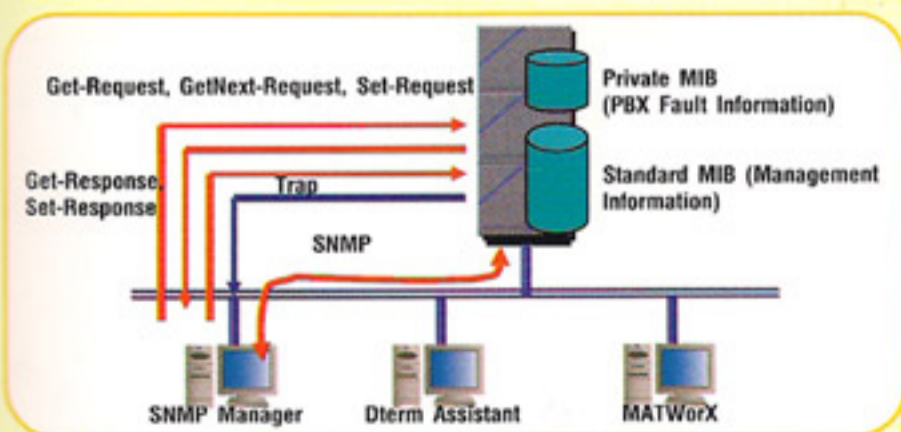
The Dterm Assistant is a web browser-based maintenance tool which allows the user to easily manage key functions by accessing the web server. Users are able to configure their own Dterm (Digital Terminal) key function settings without special engineering staff support, hence reducing the TCO (Total Cost of Ownership).

Webdial

Directories are rapidly becoming an integral part of all converged network solutions. From basic look-up tools, they have become critical component in the corporate information systems infrastructure. Management of information on employees, organizational unit and network resources (both voice and data) based on business needs can be done from a network based enterprise directory. NEC's Web Dial addresses today's evolving networks by providing a platform to enable sharing of common phone book at departmental and organizational levels. It utilizes common Light Directory Access Protocol version 3 (LDAPv3) compliant data stores.

SNMP

Simple Network Management Protocol (SNMP) is a standard protocol for TCP/IP network management, which enables a network management application software to query a management agent (network device such as router, PC host, and hub) using a supported MIB (Management Information Base). The MIB is a database of network performance information that is stored on the network devices. The 2000 IPS can support the SNMP and the standard MIB (MIB-II, defined in IETF RFC 1213).



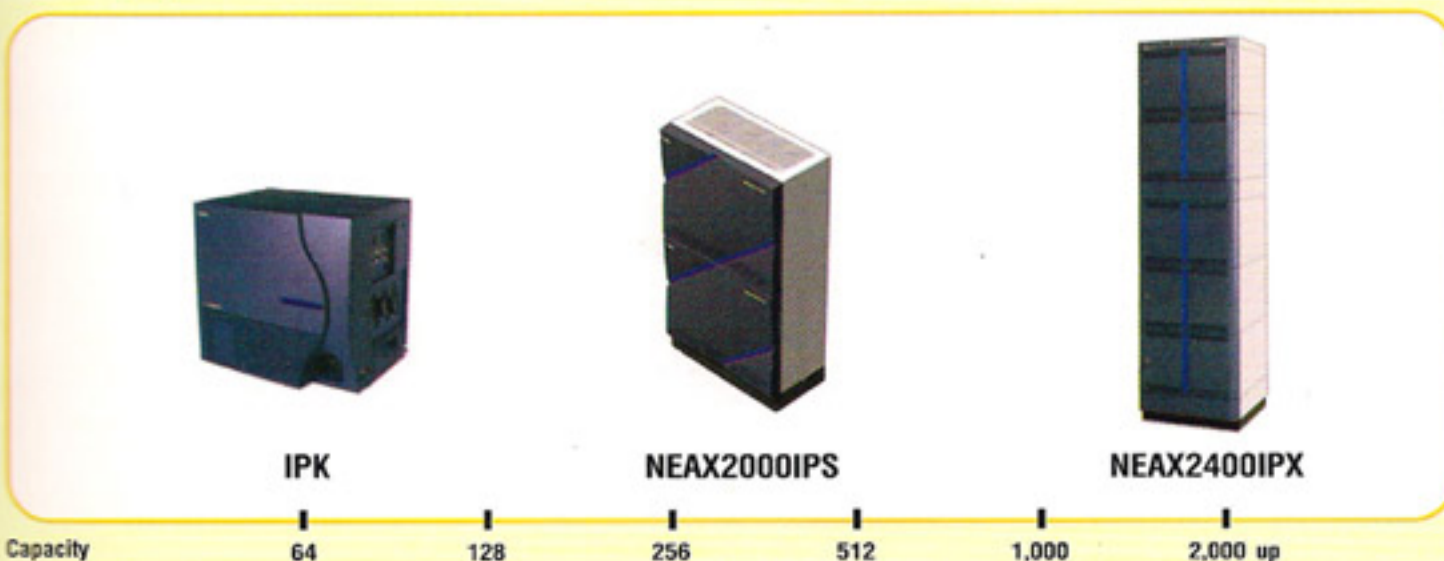
SP30



NEAX2000IPS Features

- Full complement of over 700 traditional NEC PBX features
- Intra-nodal (LAN) and inter-nodal(WAN) peer-to-peer IP connectivity
- Upgradeable from all prior versions of NEAX7400ICS M100MX/ NEAXPBX Series
- Supports legacy TDM for digital and analog telephony
- Full-featured node-to-node CCIS inter-networking
- Supports full range of NEC IP telephone sets

Line up product



Specification

Item		Description
System Capacity	Max.Number of PIM	8
	Port Capacity per PIM	64
	Max.Number of Ports	512
System Architecture	Control System	Stored Program Control
	Program Storage	FLASH ROM
	Switch System	TDM/IP
	Power Requirements	180 to 264 VAC 47 to 64 Hz
Dimensions(max Configuration;WxDxH)		430.213.350
Weight/PIM(Fully Card-mounted)		Apporx.18.5 Kg/PIM
Operating Conditions	Ambient Temperature	0 to 40 °C
	Relative Humidity	MAX 90%(non-condensing)
Installation Type		Floor Standing / Wall Mount / 19 inches Rack Mount



Specification are subject to change without notice.

Highly Flexible Configuration, with Building-block Configuration to facilitate Expansion

The NEAX2000IPS employs both building-block and universal port architecture in order to provide optimum performance and satisfy customer requirements.

Lineup of Terminals and Consoles Design for Optimum performance with NEAX2000IPS

Dterm75 Series Multifunction Digital telephones

Dterm75 Series terminals, which feature enhanced operability, are the perfect complement to the NEAX2000IPS system. 32 button terminals have a black-color model and specific model for call center. The lineup boasts four high-performance model, one of which is certain to meet the needs of your business environment.

Attendant Console

For the operator, the NEAX2000IPS provides three types of attendant consoles. For small organizations and low-traffic environments, the Dterm75 series can be used in an attendant terminal to provide powerful call handing features. For larger system, it can be used with the smart console or desk console, featuring enhanced display information and larger, ergonomically positioned keys for greater productivity and superior caller services.

Visit our website at <http://www.neaxnet.com>

Dterm Series /

-Dterm Series / Line Up-

DTR-320-1(BK) TEL



DTR-320-1(WH) TEL



DTR-160-1(BK) TEL



DTR-160-1(WH) TEL



DTR-80-1(BK) TEL



DTR-80-1(WH) TEL



DTR-80-1(BK) TEL



DTR-80-1(WH) TEL



DTR-20T-1(BK) TEL



DTR-20T-1(WH) TEL



NEC Corporation (Thailand) Ltd
2nd and 24th Floor Serm-mit Tower,
159 Sukhumvit 24 Road, Klongtoay Nua, Wattana
Bangkok 10110 Tel. 0-2259-1192 Fax. 0-2259-1199

Empowered by Innovation

NEC